



## Locals caring for our local environment

### MEA A.G.M.

**Friday 21 October,**

**Mothers' Beach, 6 pm. Start**

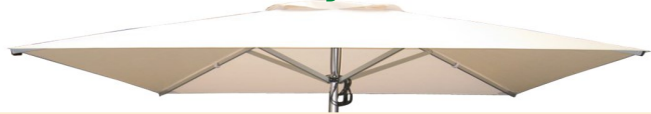
**BYO Fish and Chips,**

**URGENT  
STOP PRESS**

For something completely different, come to our AGM on Mornington Beach under the big trees. Bring fish and chips and a drink and join with all of us. You can admire our saved harbour (no marina!) and watch the boats as well as admiring all the plantings done by the Green Army and Naturelinks. The Schnapper Point plantings above the harbour were mostly done by us – the Friends groups worked really hard in 2015 and further maintenance and plantings have been done by Naturelinks in 2016 with Shire funds. The AGM itself will have two brief reports – from the retiring president, Jan Oliver, and the treasurer, Jim Price. Elections for the committee will be held and members are encouraged to stand. **Contact Jan on 59770131 or mobile 0417986077** for a nomination form – we need nominations for President and Vice President!

A little something sweet to finish the meal will be provided. If it pours, we can adjourn to the Mornington library meeting room between 6-7 pm. Check with Jan first!  
**Come along and do something different on an early Friday night!**

### MEA Community Awareness



### Growers Market, Mornington Park 8th October

Members will be manning a stall at the Growers Market this month. A display of Friend Groups at work on the foreshore and information leaflets will be available. Native tube plants will be there for sale. We aim to Increase awareness of the Association, highlight the work undertaken by the Friends Groups and encourage more locals to join us as active or supportive members. Please say hello this Saturday if you visit the market. - Christine Stewart 59756687

Issue: **08** Spring Edition



*Mothers Beach, a "Sea of Green", is the site for our AGM this year. Come and join us, eat your fish and chips and hear our reports.*



*Checking and weeding recently planted beds in front of the new toilet block at Mothers Beach. Green Army did the original planting but Friends of Mills Beach have done the maintenance, watering and plastic guard monitoring.*



## What's MEA been doing in 2016?

We have completed our Strategic Plan for 2016-18; applied for funds from Federal government, Coastcare and Tanti Creek Melbourne Water; worked with our contractors, Naturelinks, on all restoration of the Mornington foreshore and up Tanti Creek. We have objected to inappropriate developments in and around Mornington (including to VCAT); made major comments on the proposed canal estate at Yaringa Boat Harbour; made submissions on re-issuing and extending the lease arrangements for the Mornington Yacht Club and kept watching briefs on the extensions to Andrew Kerr facility (with its heritage house) and the large housing development in Barkly St Mornington (the Shire lost its application to restrict and change this development). We maintain a close eye on the Pier and any harbour activities as well as inappropriate developments in Sorrento and Mt Martha. We have requested Shire action on providing stormwater filters across Tanti Creek (still being considered with SE Water and Melbourne Water). We have attended Shire council community meetings, briefings on the various government legislation (eg the Coastal and Marine Act), proposals for updating the Scout building on Scouts Beach, and consulted with Councillors over various matters. Our web page provides further details.

---

## Mornington Peninsula Shire Council

### 2016 Nominations

The following vacancies exist for the Mornington Peninsula Shire Council:

Briars Ward (3 vacancies) Cerberus Ward (1 vacancy)

Nepean Ward (2 vacancies)

Red Hill Ward (1 vacancy) Seawinds Ward (3 vacancies) Watson Ward (1 vacancy)

Everyone under 70s to vote, and over 70s have the choice! Make your vote for the Shire Council count!

Go to [WWW.VEC](http://WWW.VEC) and pull down the menu for Council elections then Mornington Peninsula Shire. Briars Ward (covers Mt Eliza-Mornington-parts of Mt Martha) has 15 candidates standing, two of whom have been on Council before – Bev Colomb (former mayor and current councillor) and Leigh Eustace (former Mt Eliza councillor). Photographs and statements of 200 words are available for each candidate so you should read these carefully and make an informed choice. Postal vote papers are being sent out by October 4<sup>th</sup> and have to be in by 21 October (mailed). Results hopefully are declared a week later. The majority of existing councillors are NOT re-standing. Protecting the environment and involvement with community action groups feature in several statements. Voting is preferential too, so you have to number every box.

## Working Bees with Friends of MEA

Volunteers meet together at several places along the foreshore and cliffs to weed, plant and maintain the natural vegetation. At present, our groups are funded by the Shire or Melbourne Water for Tanti Creek. MEA missed out on the Coastcare grants this year, but we do have a federal grant to buy Scout guard cameras to install on Red Bluff (above Mills Beach) to monitor the activities of animals there – cats, and foxes have been recorded in big numbers, and they eat birds, lizards, small bandicoots and other native animals. These are feeding on and sheltering in our specially planted plants and grasses and it is disturbing to know what is going on up there. If you are interested in this program, please **contact Jan 0417986077** as training will be provided.

**Friends of Tanti Creek** obtained a grant from the Shire some years ago to prepare and install signage about the Creek at the estuary and at Stone's Crossing. Both these sites are well used by foot traffic and the signs provide history, details and pictures of the native plants and animals you can see. The signs will be installed in the next month.

**Friends of Fisherman's Beach:** This small group has been working behind the Bowls Club, along the cliff and Royal Beach in 2016 and you can see how weeds have been removed and green shields protect the new plants. Peter Deerson is in charge [pdeerson@netscape.net](mailto:pdeerson@netscape.net)

**Friends of Mills Beach** meet every month at various sites along Mills Beach, Shire Hall Beach and Scouts beach and on Red Bluff. In 2016, Scouts beach has been replanted with spinifex and some trees, replacing those that had

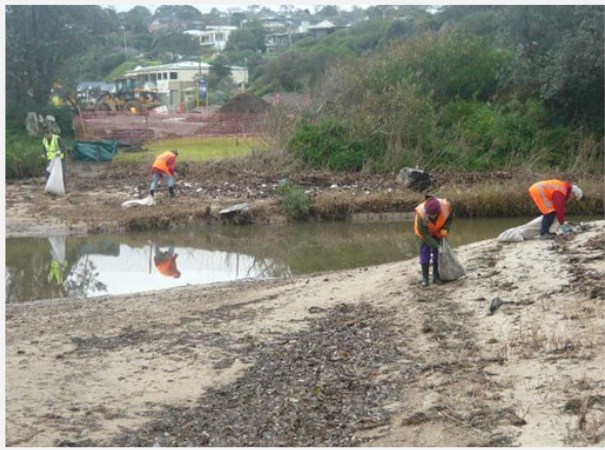


*August planting on Shire Hall Beach, the first time this area has been restored.*

been planted in 2015 but mostly died in the drought that year. Shire Hall Beach also has had major clearing done by the Green Army team, with Friends planting the dune and the area in front of the car park. Plants are protected by new biodegradable plastic shields. If you are walking down there, please empty your drink bottles or collect water from the tap in the car park and water any of those plants. Every little helps, especially if there is a salty wind or not much rain. Red Bluff has also been weeded and planted – especially along the main paths and again, empty your drink bottles onto any plants and read the two signs explaining what we are doing there. We will also be assisting the Life Saving Club to plan and plant around the clubhouse and on the car park slopes, using a Coastcare grant for 2016-2017. Queries Jan Oliver 0417986077

**WATCH OUT FOR NEW INTERPRETATIVE SIGNAGE AT MILLS BEACH AND STONES CROSSING (Tanti Creek).**





Friends remove debris from Tanti Creek July 2016

**Tanti Creek Friends** meets every month too, and has been weeding and replanting at Stone's Crossing (where the poplars, a planted weed tree) have been removed and planting along the creek banks there commenced in spring 2016. Friends have had to spend four working bees over the winter months clearing up rubbish from the estuary of Tanti at the car park and further upstream. This debris contains masses of plastics, food containers and drink straws, and used syringes. Nasty stuff which shouldn't be there! Some is being washed down, and much is being washed in on the big winter surfs we have had in 2016. Queries: Marty Lenard on 0427888712

**Beleura-Carr Creek cliff path:** Contractors are currently repairing the cave-in and path slip (caused by uncontrolled stormwater from houses above); our Friends and local residents have commenced planting appropriate species in some of the safe areas along the path. Work will continue

and increase as soon as the contractors have moved away and the path reopened (promised by the Shire in time for summer!). Queries to Peter Nicholson on 0400326306 (Refer Facebook).

### Dates for working bees for rest of 2016:

Tanti Creek **Sunday 9 October; Tuesday 25 October; Tuesday 29 November**

Mills Beach **Sunday 16 October; Monday 14 November; Sunday 18 December**

## MILLS BEACH CAR PARK RENOVATIONS



Renovations are now completed. The car park is paved with clearly defined parking. The electric BBQ has been moved close to the ramp (against community wishes), though we only lost 4 large trees (banksias) and minor shrubs during the development. New gardens are prepared and mulched. Plantings will commence early in October and maintenance will be the responsibility of the contractors. Local residents are not pleased with the bitumen, or the car park spacing, or the lack of a path down the two-way, shared drive in and out and voiced their opinions to Shire Infrastructure team late in September. MEA has pushed hard for a satisfactory car park area, and backed the Life Saving Club in its desire to improve access for emergency vehicles and to regulate the car parking and BBQ use. The car park next to Red Bluff (estuary) will be paved in the next year or so and is less high priority. Our

new councillors will have to cope with this and complaints from residents.

### Roger Lambert's Memorial Seat installed above Mills Beach

In memory of a long time hardworking Friend, Roger Lambert, a seat was installed with a plaque on the track above Mills Beach mid 2016. Roger worked hard on Red Bluff to clear weeds and his death leaves a gap in our working bees.

*After the working bee, Friends can sit on the new seat on Red Bluff, overlooking Mills Beach in the area where Roger worked so hard.*



## Contact Us:

- [www.morningtonenviro.org.au](http://www.morningtonenviro.org.au)
- [morningtonea@gmail.com](mailto:morningtonea@gmail.com)
- PO Box 580 Mornington 3931
- Monthly Meetings

7:30PM 2nd Thursdays Feb. – Dec.

Mornington Library Meeting Room.

**President:** Jan Oliver

0417986077

**Vice Pres.:** Christine Stewart

59756687

**Secretary:** Franz Bjerkhamn

0407572089

**Tanti Creek Friends:** Martin Lenard

0427888712

[mlenard@bigpond.net.au](mailto:mlenard@bigpond.net.au)

**Mills Beach Friends:** Jan 0417986077,  
[morningtonea@gmail.com](mailto:morningtonea@gmail.com)

**Fisherman's Beach:** Peter Deerson:

[pdeerson@netscape.net](mailto:pdeerson@netscape.net)

## WEBSITES OF INTEREST

[www.cleanupourwater.com.au](http://www.cleanupourwater.com.au)  
[www.info@peninsulaspeaks.org.au](mailto:info@peninsulaspeaks.org.au)  
[www.marineconservation.org.au](http://www.marineconservation.org.au)  
[www.ppwcmma.org.au](http://www.ppwcmma.org.au)  
[www.landcareonline.com.au](http://www.landcareonline.com.au)  
[www.nattrust.com.au](http://www.nattrust.com.au)

### Looking Forward: *Mornington Peninsula 2030:*

**Peninsula Speaks**, the community organisation on the Mornington Peninsula to which MEA belongs, is asking for your help to complete a survey to get a broad range of opinions on the future of the Peninsula – say up to 2030. They need a representative sample of 3000. They are requesting that people email [info@peninsulaspeaks.org.au](mailto:info@peninsulaspeaks.org.au) to register their interest. You will then be contacted when the Survey commences. It is important that you contribute and any individual information and names will be treated confidentially.

### MEA General meeting speaker 2015:

Jeff Yugovic spoke to MEA in 2015 about the change in predators on the Peninsula and the impact this has on native fauna. If you want to follow this up, link to his new paper:

Yugovic J 2016. When predators go missing: native mammal herbivore imbalance in south-east Australia.

[spiffa.org/do-ecosystems-need-top-predators](http://spiffa.org/do-ecosystems-need-top-predators)

Your comments are welcome.

### Join in any of our activities and show you care about the local environment!

If THIS IS YOU membership forms are available on the web site.

Fees are: Family \$15; Single \$10; Concession \$7

You can write to Mornington Environment Association Inc. P.O. Box 580 Mornington, 3931 or

email [morningtonea@gmail.com](mailto:morningtonea@gmail.com)

Please include name, address, phone and email address.

Working Bee volunteers are contacted by email or phone.